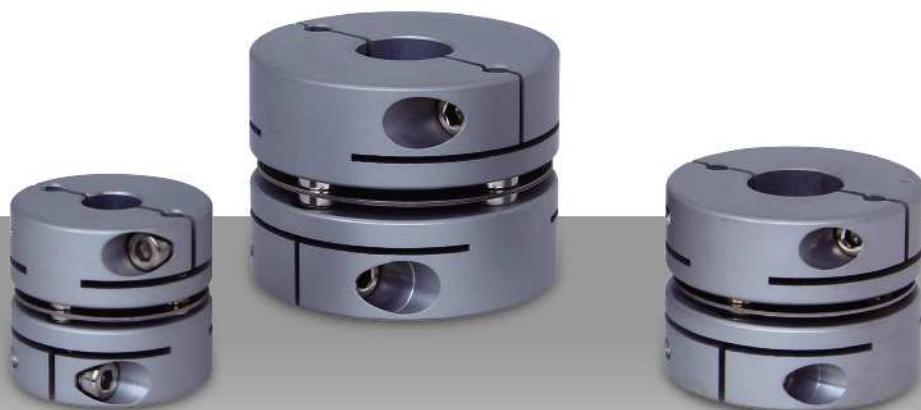


XHSA-C



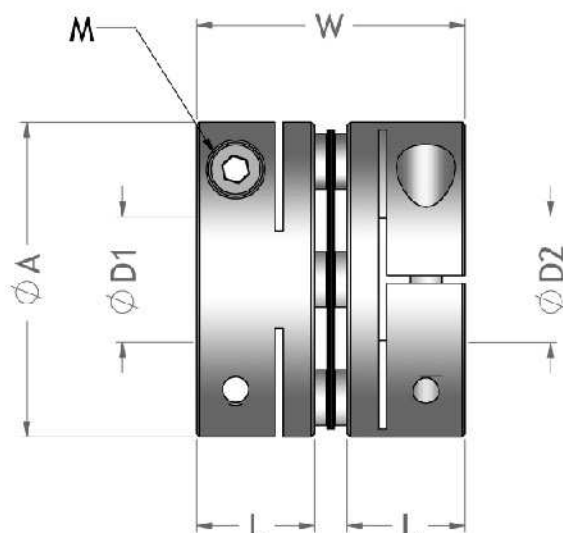
Features

- Disk type flexible coupling.
- Compact design with short overall length.
- Stainless steel disks absorb angular and shaft end-play misalignments, but do not absorb parallel misalignment.
- Suitable to small servo system exact transmission.
- Low moment of inertia backlash-free.
- Finished products featuring two different end bore diameters available in stock.
- Clamp type.
- XHSA-C Body : Extra Super Duralumin.

特性

- 簧片型撓性聯軸器
- 長度短，體積小巧。
- 單組不銹鋼簧片可容許偏角和軸向偏差；但不容許偏心。
- 適於中小型伺服馬達精密定位傳動。
- 低慣性、無背隙。
- 兩端不同孔徑的產品標準化。
- 夾鉗螺絲型固定。
- XHSA-C 本體：鋁合金材質。

Setscrew type



Specifications

unit : mm

Product No 產品名稱	Rated Torque 常用扭矩 (N.m)	Max. Torque 最大扭矩 (N.m)	Max. Rotational Frequency 最高迴轉數 (min ⁻¹)	Moment* Of Inertia 慣性 (kg.m ²)	Error of Angularity 容許角偏差 (°)	Error of Shaft End-play 容許軸向偏差 (mm)	Mass** 質量 (g)
XHSA-27C	2.5	5.0	23000	2.9x10 ⁻⁶	1°	±0.2	28.0
XHSA-35C	5.0	10.0	18000	7.9x10 ⁻⁶	1°	±0.2	53.0
XHSA -40C	9.0	18.0	16000	1.9x10 ⁻⁵	1°	±0.3	87.0
XHSA-45C	12.0	24.0	14000	2.7x10 ⁻⁵	1°	±0.3	109.0
XHSA -50C	18.0	36.0	12000	6.6x10 ⁻⁵	1°	±0.3	184.0
XHSA -57C	26.0	52.0	11000	9.7x10 ⁻⁵	1°	±0.4	237.0
XHSA -68C	62.0	124.0	10000	23.7x10 ⁻⁵	1°	±0.4	398.0

> Ma x. Bore Moment of Inertia / 最大孔徑時慣性矩

> Max. Bore Mass / 最大孔徑時質量

Dimension

unit : mm

Product No 產品名稱	A	L	W	Stock Bores 標準孔徑 D1xD2(公差 H8)		M
				Min D1	Max D2	
XHSA-27C	27	11	24.5	5	14	4-M3
XHSA-35C	35	12	27	6	16	4-M3
XHSA -40C	40	15	34	8	20	4-M4
XHSA-45C	45	15	34	8	22	4-M4
XHSA -50C	50	20	45	10	25	4-M5
XHSA -57C	57	20	45	12	28	4-M5
XHSA -68C	68	24	54	14	35	4-M6

When Ordering

請依照型錄所制訂的產品規格訂購，兩側孔徑可依客戶需在規範內加工製作。

When placing an order, make sure to include product no.

And stock bores (both sides) of product.

XHSA - 50C - ∅20 x ∅20

Product No D1 x D2